



Harrow Road
, Wembley, , HA9 6BD

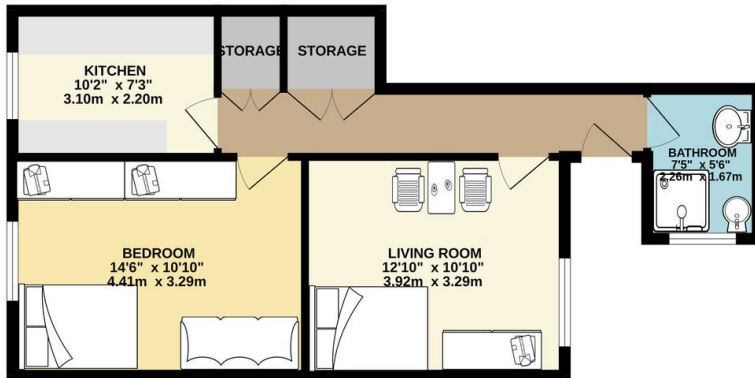
Guide Price £219,000

Property Summary



GROUND FLOOR
512 sq.ft. (47.5 sq.m.) approx.

%epcGraph_c_1_245%



TOTAL FLOOR AREA: 512 sq.ft. (47.5 sq.m.) approx.
Whilst every attempt has been made to ensure the accuracy of the floorplan contained here, measurements of doors, windows, rooms and any other items are approximate and no responsibility is taken for any error, omission or mis-statement. This plan is for illustrative purposes only and should be used as such by any prospective purchaser. The services, systems and appliances shown have not been tested and no guarantee as to their operability or efficiency can be given.
Made with Metropix ©2023

- One Bedroom Apartment
- First Floor
- View Towards Main Road
- Good Size Living Room
- Great Transport Links
- Good Amenities Nearby
- Ideal for Investment
- Above the Shop
- Rear Entrance
- No Parking

38 Court Parade
Wembley
Middlesex
HA0 3HS

www.propertyhubltd.com
sales@propertyhubltd.com
0208 459 3333

Agents Note: Whilst every care has been taken to prepare these particulars, they are for guidance purposes only. All measurements are approximate and for general guidance purposes only and whilst every care has been taken to ensure their accuracy, they should not be relied upon and potential buyers/tenants are advised to recheck the measurements