



Property Hub



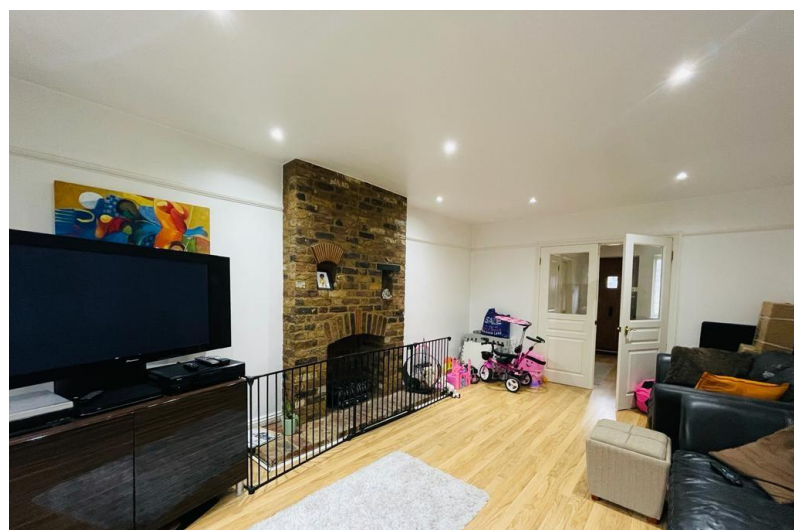
Mountington Park Close

Harrow, HA3 0NW

- Detached House
- Five Bedrooms
- Shower Room & En-Suite to Main Bedroom
- Mount Stewart Catchment Area

Guide Price £995,000

EPC Rating '61'





TOTAL FLOOR AREA: 1815 sq ft (167.3 sq m) approx.
 Whilst every effort has been made to ensure the accuracy of the floor plan, the dimensions of the rooms, walls, doors and windows are approximate and no responsibility is taken for any error or omission. This plan is for guidance purposes only and should be used as such for any comparison purposes. The actual dimensions of the rooms may vary slightly from those shown on the plan. Made with Metagix C2022.



38 Court Parade
 Wembley
 Middlesex
 HA0 3HS

www.propertyhubltd.com
sales@propertyhubltd.com
 0208 459 3333

Agents Note: Whilst every care has been taken to prepare these particulars, they are for guidance purposes only. All measurements are approximate and for general guidance purposes only and whilst every care has been taken to ensure their accuracy, they should not be relied upon and potential buyers/tenants are advised to recheck the measurements.