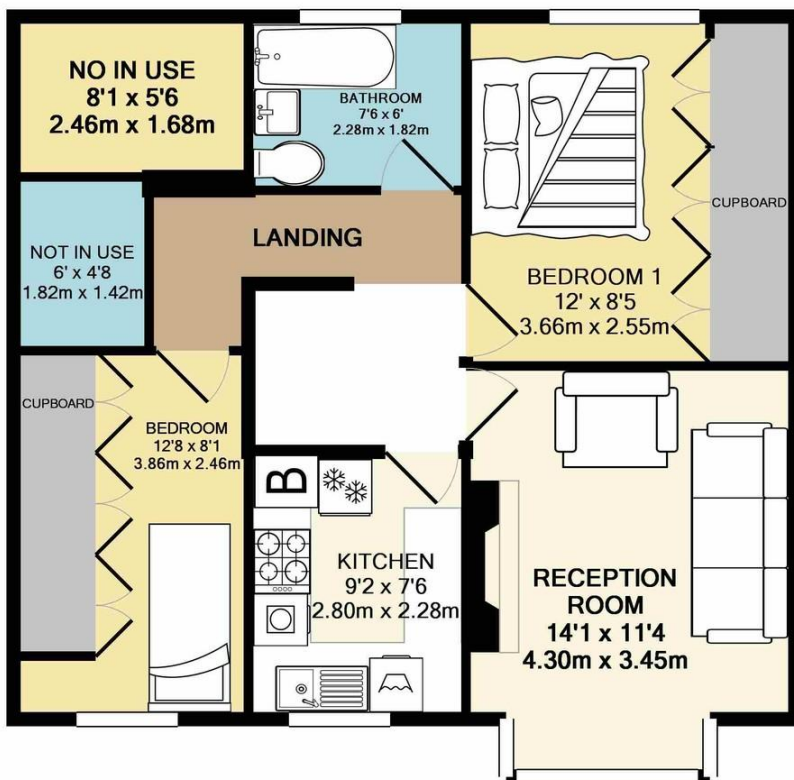




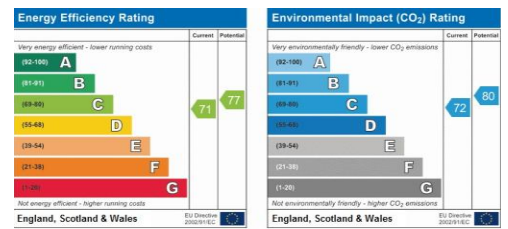
Elms Lane
, Wembley, , HA0 2NX

£1,400 pcm

Property Summary



TOTAL APPROX. FLOOR AREA 618 SQ.FT. (57.4 SQ.M.)



- First Floor Maisonette
- Two bedroom
- Family bathroom
- Fitted kitchen
- Reception
- Carpeted throughout
- Double glazed windows
- Central heating
- No Parking
- Available immediately

38 Court Parade
Wembley
Middlesex
HA0 3HS

www.propertyhubltd.com
info@propertyhubltd.com
0208 903 1002

Agents Note: Whilst every care has been taken to prepare these particulars, they are for guidance purposes only. All measurements are approximate are for general guidance purposes only and whilst every care has been taken to ensure their accuracy, they should not be relied upon and potential buyers/tenants are advised to recheck the measurements